



EDUCATION

**Oway, it's
not just
for hair,
it's also
for skin!**





*DID YOU KNOW THAT EACH DAY A WOMAN APPLIES
ON HER SKIN, AN AVERAGE OF MORE THAN 200
CHEMICALS? AND ABOUT 60% OF THOSE CHEMICALS
ARE ABSORBED BY THE BODY?*



FOR THAT REASON,
OWAY PROPOSES A SKIN
CARE LINE INSPIRED BY
“CLEAN BEAUTY”

Clean, healthy, natural
beauty.

Made with extremely high
quality, **standard ingredients.**

Beauty made, especially, with
transparency.





Certified beauty.

‘WHAT DOES THIS ACTUALLY MEAN?’



Very high percentages
of natural and naturally
derived raw materials



Minimum percentage
of synthetic ingredients
in each formula



No trace
of genetically modified
ingredients



Only ingredients obtained
using **natural processes**
that do not impact negatively
on the environment



Only **recyclable**
packaging and no use
of halogenated
plastics



No exposure
to ionising radiation of the
raw materials and during
the production process



All Oway skincare products use
100% OZONE, OSMOTIC
WATER: TWICE PURE.

REVERSE OSMOSIS is a completely natural process that technology has “borrowed” from Nature. It is a secure and effective system, which **separates the water from foreign substances through the use of special membranes**, such as semi-permeable or osmotic. These **membranes allow pure water filtration** and retention of foreign substances both in suspension and dissolved.

OZONISATION

After reverse osmosis, we proceed to water OZONISATION. **Ozone, a natural molecule composed of 3 atoms of oxygen, destroys any micro-organisms residues by oxidation, by breaking the cell membrane in a few seconds.**

FORMULAS DESIGNED TO REDUCE THE RISK OF ALLERGIES.



nickel tested

OW BEAUTY runs on each production batch of line products a specific test that allows monitoring any traces of nickel that may induce allergy. **To meet the needs of consumers with allergic and reactive sensitive skin.**



dermatologically tested

“Dermatologically tested” ensures that the product has complied with strict controls and it is **non-irritating and safe.**

Also: 100% natural fragrances based on essential oil blends with 0% artificial colorants, parabens, silicones, petrolatum, peg bgg&ppg, sles/sls, edta phthalates, or gmo’s.



PURE AND 100% RECYCLABLE GLASS AND ALUMINIUM.

GLASS BOTTLES
AND JARS AND
ALUMINUM
TUBES TO
GUARANTEE
BOTANIC
EXTRACTS
PURENESS AND
RESPECT FOR THE
ENVIRONMENT
BECAUSE THEY
ARE 100%
INFINITELY
RECYCLABLE.

velvet body fluid

FLUIDO CORPO RINNOVATORE CELLULARE CON NOCE BIODINAMICA, CHIA BIOLOGICA, PATALUA ETIOPE, PANTA DELL'IMMORTALITÀ. // CELL RENEWAL BODY FLUID WITH BIODYNAMIC WALNUT, ORGANIC CHIA, FAIR TRADE PATALUA AND HERB OF IMMORTALITY



NATURE+SCIENCE= RESULTS (SUPER ACTIVE RESULTS)

WHEN IT COMES TO NATURAL PRODUCTS,
YOU OFTEN THINK ABOUT PRODUCTS WITH
LIMITED RESULTS AND EFFECTIVENESS.

IN FACT, THE EVOLUTION OF **GREEN
CHEMISTRY** NOW ENABLES US TO OFFER
NATURAL PRODUCTS OF THE **HIGHEST
PERFORMANCE**.

In each OW skincare product, you will find a
SUPERACTIVE ingredient. (In fact, there are
8 of them.) It is **an active ingredient or a
complex of concentrated actives**, providing
the **highest performance**, which makes the
products ultra-effective and also suitable to
fight specific aesthetic imperfections.



Clear Ingredients

To eliminate the chemicals from your own beauty routine, it is important to first learn to recognize them. Sometimes the lists of cosmetic ingredients are not easily understood, since they are written in INCI name, indecipherable to non-experts.

FYI:

- In Europe, 1373 Chemicals are banned from being in Cosmetics. In the U.S. there are 8
- In the U.S., manufacturers may use almost anything they choose and there are no laws that require companies to demonstrate safety of ingredients in products.
- No legal definitions for phrases “cruelty free” or “not tested on animals” which equals products being labeled incorrectly. **READ THE INGREDIENTS!**
- Formaldehyde – nail polish, hair gels, shampoos and lotions. A known human carcinogen.
- Triclosan – soaps, deodorants, toothpaste. Disrupts body’s natural hormone system.
- Parabens – lotions, ointments, and hair products. Linked to breast cancer tumors
- Ethylene Oxide – fragrances & shampoos. A known human carcinogen.
- Lead – lipstick, foundation = 650 cosmetics. Neurotoxin linked to learning/behavioral problems



Legend:

[ND]	Naturally derived ingredient: means that the ingredient is natural or naturally derived. In our formula, at least 98,8%.
[O]	Organically grown ingredient: the raw material comes from certified organic agriculture.
[B]	Biodynamic ingredient: the ingredient derives from certified biodynamic agriculture.
[FT]	Fair trade ingredient: the raw material is purchased from fair trade through our partner suppliers.
[EO]	Essential oil: indicates that the ingredient is an essential oil.
[NI]	Nature identical: means that the ingredient is synthetic, but it has a structure identical to a natural ingredient. In OW BEAUTY only the preservative system is [NI]
*	From natural essential oils: this legend refers to fragrance of OW BEAUTY products. NATRUE certifying body recommends to define, on the list of ingredients, the fragrance as PARFUME [FRAGRANCE]. Besides, with the asterisk, the list of essential oils and components that are part of the aromatherapy fragrance are explained.

NATRUE certifies products with actual percentages of natural ingredients in the formula. You will not find water indicated on the label with the symbol [ND], even though it is a natural element par excellence.

Ingredient list:

🌿 **Ingredienti / Ingredients:** (ND) Natural Derived Ingredient / (O) Organic Ingredient / (BD) Biodynamic Ingredient / (FT) Fair Trade Ingredient / (PS) Preservative System / (NI) Natural Identical Ingredient - Aqua (Water), Passiflora Incarnata Seed Oil (ND), Prunus Amygdalus Dulcis (Sweet Almond) Oil (ND), Butyrospermum Parkii (Shea) Butter (ND), Malva Sylvestris Flower/Leaf Extract (ND), Glycerin (ND), Macadamia Ternifolia Seed Oil (ND), Hydrogenated Olive Oil (ND), C 14-22 Alcohols (ND), Cetearyl Alcohol (ND), Glyceryl Stearate (ND), Parfum (Fragrance)*, Olea Europaea (Olive) Fruit Oil (ND), C 12-20 Alkyl Glucoside (ND), Cistus Incanus Flower/Leaf/Stem Extract (ND), Gynostemma Pentaphyllum Leaf/Stem Extract (ND), Glutamine (ND), Salvia Hispanica Seed Oil (ND)(O), Juglans Regia (Walnut) Leaf Extract (ND)(BD), Oenocarpus Bataua Fruit Oil (ND)(FT), Olea Europaea (Olive) Oil Unsaponifiables (ND), Xanthan Gum (ND), Undecane (ND), Tridecane (ND), Tocopherol (ND), Beta-Sitosterol (ND), Squalene (ND), Citric Acid (ND), Sodium Stearoyl Glutamate (ND), Decyl Glucoside (ND), Phenethyl Alcohol (ND), Potassium Sorbate (NI)(PS), Sodium Benzoate (NI)(PS), Benzyl Alcohol (NI)(PS), Limonene*, Linalool*, Geraniol*, Citral*.***From natural essential oils:** Citrus Limon (Lemon) Peel Oil, Citrus Aurantifolia (Lime) Oil, Citrus Nobilis (Mandarine Orange) Peel Oil, Citrus Aurantium Dulcis (Orange) Peel Oil, Citrus Aurantium Amara (Bitter Orange) Leaf/Twig Oil, Cananga Odorata Flower Oil.

Perfect skin cleansing cream

CLEANSING AND SKIN RENEWAL FACE CREAM WITH
**BIODYNAMIC WALNUT, ORGANIC CHIA, ETHICALLY-
PRODUCED PATAUA' AND PLANT OF BEAUTY**

- A rich and soft **purifying** cream that improves the skin **comfort**, leaving it **soft, purified** and **silky**.
- Removes makeup, toxins and impurities from the skin with a deep yet gentle action.
- **Antioxidant** protection and antifree radicals.
- Ideal for skins from **normal to dry**.



75ml | 270ml

pH 4.6-5





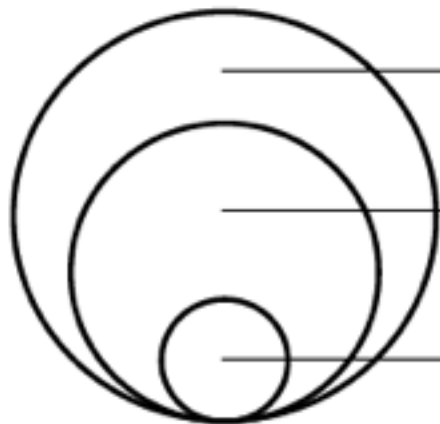
SUPER ACTIVES: PLANT OF BEAUTY+L-GLUTAMINE

Plant of beauty(Cistus Incanus): the plant with the highest content of polyphenols in Europe, preserves the **freshness** and **youthful** of the **skin**.

L-Glutamine: An authentic fuel for the cells for a **compact** and **elastic skin**.

Polyphenols: or antioxidants prevent aging, fight free radicals from the environment and increase oxygen, which help promote cell renewal.

FOCUS ON: PLANT OF BEAUTY + L-GLUTAMINE



strengthens the skin's antioxidant defence system
(against oxidative and mechanical stress and external agents)

blocks lipid oxidation
(against cell damage and skin ageing)

activates collagen synthesis
(increase in skin repair processes)

De-stress tonic potion

REACTIVATING, ANTI-STRESS FACE TONER
WITH **BIODYNAMIC WALNUT, ORGANIC
ECHINACEA, ETHICALLY-PRODUCED
VIOLET RICE AND ALPINE SKULLCAP**

- Light lotion that **removes dead cells, lightening the complexion.**
- Gives energy to the skin and carries out an **anti-fatigue**, soothing and **antiradical** action.
- Produces a thin **layer of hydration**, preparing the skin for subsequent treatments.
- **Smooth, soft skin, pleasantly hydrated.**



140ml | 290ml



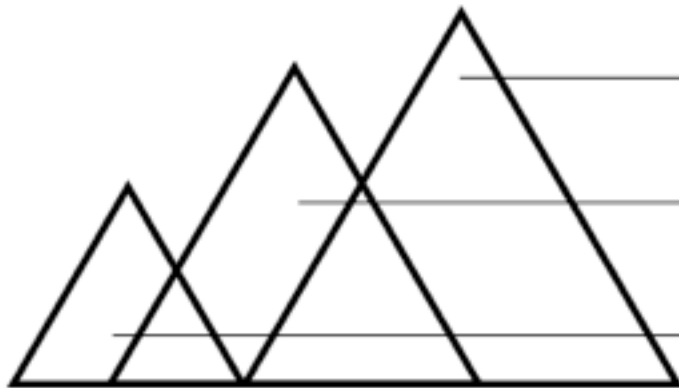


SUPER ACTIVE: ALPINE SKULLCAP

Alpine Skullcap: an active ingredient grown on the green Swiss Alps.

In vitro tests show that this pure active ingredient **increases** the **production of beta-endorphins**, neurotransmitters naturally present in the body which **cause euphoria** and **happiness**

FOCUS ON: ALPINE SKULLCAP



increases β -endorphins production
more happiness and brightness, less stress

stimulates the production of lipids
a skin full of comfort, softness, hydration

anti-inflammatory, soothing action
thanks to the presence of polysaccharides

Radiance face balm

ILLUMINATING AND SMOOTHING FACE CREAM
WITH **BIODYNAMIC WALNUT**,
ORGANIC CHIA, **ETHICALLY-PRODUCED**
PATAUA' AND **PLANT OF BEAUTY**

- **Velvety** and generous consistency that blends with the skin, giving subtle citrus notes.
- Nourishes the skin making it **luminous** and **smooth**.
- Gives **compactness to the skin barrier**.
- Protective **antioxidant** action, that preserves the **youthfulness** of the skin.
- Progressive **lipid-replenishing** effect that improves the skin's appearance.



50ml | 125ml pH 4.6-5

Super Active Ingredients: Plant of Beauty (Cistus Incanus) & L-Glutamine.

Regenerating booster

REVITALISING AND PROTECTIVE FACE
CONCENTRATE BASED ON **PHYSALIS
ANGULATA**

- **Protects** your skin **against external aggressions** and increases its natural power of **self-defence**.
- **Multi-active** action, which **protects** the skin from external stress and makes it more **resistant, regenerated** from inside.
- **Stronger, vital, young** and **supple** skin.



Shake well before use. Add 3-4 drops to Radiance face balm and apply.



SUPER ACTIVE: PHYSALIS ANGULATA

Physalis Angulata: original fruit of the tropics and characteristic of the Amazon area:

- **cortisone-like** action, which **strengthens the skin immune defences** without contraindications of cortisones synthesis;
- optimises the functions of the skin cells;
- increases the **multi-active defence capability of the skin**.

FOCUS ON: PHYSALIS ANGULATA



protection from solar radiation (anti-thermal ageing) + **3.32 times** the colligin protein, deputed to protect the skin from thermal stress*

corticoid-like action (soothing and anti-inflammatory)
-19.2% production of the main factors involved in inflammation**

repair of collagen
Increase of about **2 times** the synthesis of pro-collagen***

*Assessment of genic expression of colligin in culture of human keratinocytes treated with PHYSAVIE (0.025%) with Infrared radiation (IRR) and Visible Light after 24 hours of incubation.
/ **Assessment of kappa B (NF-kB) nuclear transcription factor activity in human keratinocyte treated with PHYSAVIE (0.025%) and with inflammatory stress / ***Assessment of genic expression of pro-collagen in culture of human fibroblasts treated with PHYSAVIE (0.025%) with infrared radiation (IRR) and Visible Light (VL) after 24 hours of incubation.

Replumping booster

REPLUMPING AND RESTORATIVE FACE CONCENTRATE BASED ON **BIORETINOL**

- **Replumping** and **restorative** intense concentrate for the face with **retinoid-like** effect.
- **Restores density** to the skin from the inside, **leaving it firm**.
- **Reduces the signs of age** and **gives a smooth and relaxed appearance**.
- **Lightens** the complexion, fighting the **skin blotches**.
- The area around the face appears more **defined, resculpted, rejuvenated**.



25ml

Shake well before use. Add 3-4 drops to Radiance face balm and apply.



SUPER ACTIVE: BIORETINOL

Bioretinol:

a revolutionary **vegetable-based complex** which has a **retinoid-like action, without** the unpleasant **side effects** of retinol synthesis: **BIORETINOL**. Inspired by the aesthetic techniques of skin replenishing, Bioretinol carries out a **wrinkles filling** action, **naturally stimulating** the **collagen synthesis**.

FOCUS ON: BIORETINOL

17%

Reduction in
deep
wrinkles*

59%

Reduction in
skin
roughness*

25%

Improved
skin density*

13%

Improved
skin
elasticity*

Ex vivo tests. Emulsions with Bioretinol at 2% vs basal condition (before treatment). 40 female volunteers 35-65 years old. Application on forearms and face, twice a day.

Detox body bath

DETOXIFYING AND ANTI-DRYNESS SHOWER GEL WITH **BIODYNAMIC WALNUT, ORGANIC ECHINACEA, ETHICALLY-PRODUCED VIOLET RICE AND ALPINE SKULLCAP**

- A **creamy gel consistency**, which **respects** the physiological **pH** of the epidermis.
- Composed of a **gentle cleansing base of vegetable origin**, it has a valuable anti-dryness effect.
- Thanks to the **polyphenols**, it carries out an **anti-stress and anti-radical** action.
- **Protects** the skin from external agents, leaving it **silky** and **soft**.

Super Active Ingredient: Alpine Skullcap



Velvet body fluid

NOURISHING BODY FLUID WITH A SILKY EFFECT WITH **BIODYNAMIC WALNUT ORGANIC CHIA, ETHICALLY-PRODUCED PATAUA'** AND **HERB OF IMMORTALITY**

- A **blending fluid** that penetrates immediately to make **instant repair**.
- **Nourishes** the skin deep down, leaving it feeling **soft** and **comfortable**.
- **Improves** the **integrity** of the **lipid barrier**, giving compactness and flexibility and **prolonging the youthfulness** of the tissues.
- **Transforms** the skin, leaving it **silky** and **smooth**.



150ml | 500ml

pH 4.6-5



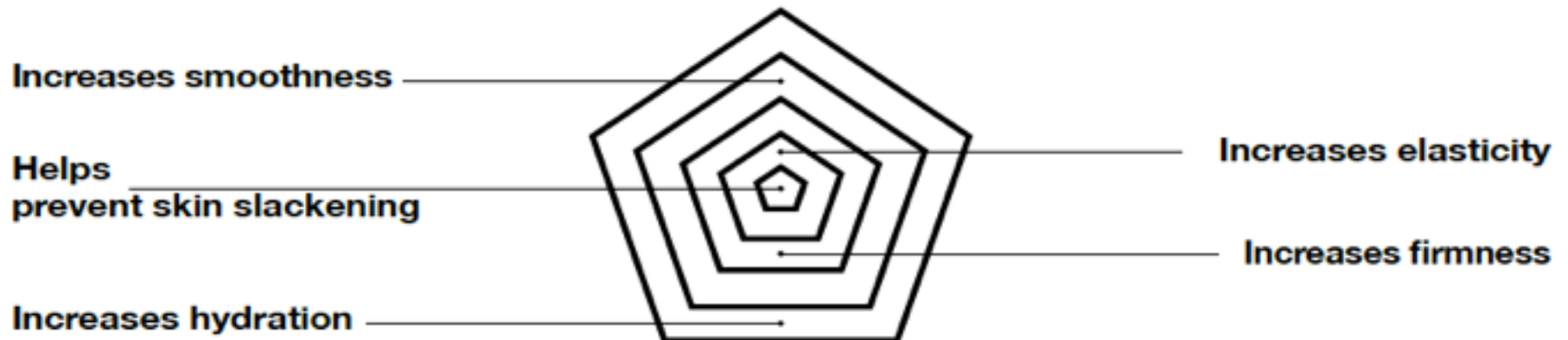


SUPER ACTIVE: HERB OF IMMORTALITY

Herb of Immortality: alias *Gynosthemma Pentaphyllum* plays a dual action to **restore the integrity** of the **skin barrier**:

- it **strengthens** the **horny layer** (outermost layer where dead skin cells lie), for a considerably more turgid skin
- it **stimulates** the **lipid synthesis**, for a **more toned** and **compact skin**.

FOCUS ON: HERB OF IMMORTALITY - exclusive action at 5 levels



Fabulous body oil

BODY OIL-ELIXIR WITH A SATINY AND ELASTICISING EFFECT CONTAINING BIODYNAMIC BLOOD ORANGE, ORGANIC TAMANU, ETHICAL PATAUÀ AND INCA INCHI

- Composed of **100% of natural origin ingredients.**
- **Dry texture** for an easy absorption.
- Alchemy of precious oils that leaves the skin wonderfully soft and smooth.
- **Satiny effect** that wraps the skin in a subtle aromatherapeutic fragrance.
- Gives flexibility and **compactness** and **strengthens the skin's protective barrier.**



140ml



SUPER ACTIVE: INCA INCHI OIL

Inca Inchi Oil coming from Peruvian Amazon is one of the latest discoveries of cosmetic research.

The Inca Inchi oil works in synergy with other precious oils of the formula: **Passion flower oil, Organic Tamanu oil, Essential oil of biodynamic blood Orange, Ethically produced Patauà Oil and Rice Bran oil.**

FOCUS ON: INCA INCHI OIL



restructures and repairs
the skin, even when dry
and dehydrated



it increases the barrier
effect of the horny layer
of the epidermis



maintains the skin
in an optimal level
of hydration

Ultra-rich body oil

REGENERATING AND SUBLIMATING BODY OIL
WITH **BIODYNAMIC BLOOD ORANGE, ORGANIC
TAMAN, ETHICALLY-PRODUCED PATAUA' AND
INCA INCHI**

- Composed of **100% naturally derived ingredients**.
- A generous oil **treatment** for a deep-down body **massage**.
- **Regenerates** and **elasticises** the tissues.
- **Fights skin slackening**, improving the skin's **tone** and **compactness**.
- Nourishes the skin deep down, leaving it **velvety** and **luminous**.
- **Anti-ageing** and **anti-oxidising**.

Super Active Ingredient: Super Inca Inchi Oil



290ml

Slim & shape booster

REDUCING AND RESCULPTING BODY CONCENTRATE BASED ON **PINK PEPPER**

- Stimulates the **elimination of localised adiposity**.
- Significantly **reduces** the **formation** of new **adipocytes**.
- **Reduces accumulations of fat**, reshaping your silhouette.
- The skin is smoother, **cellulite blemishes are reduced**.
- Gives a reducing and **slimming action** to body treatments of the line.



25ml

Shake well before use. Add 3-5 drops to Velvet Body Fluid and apply to body.

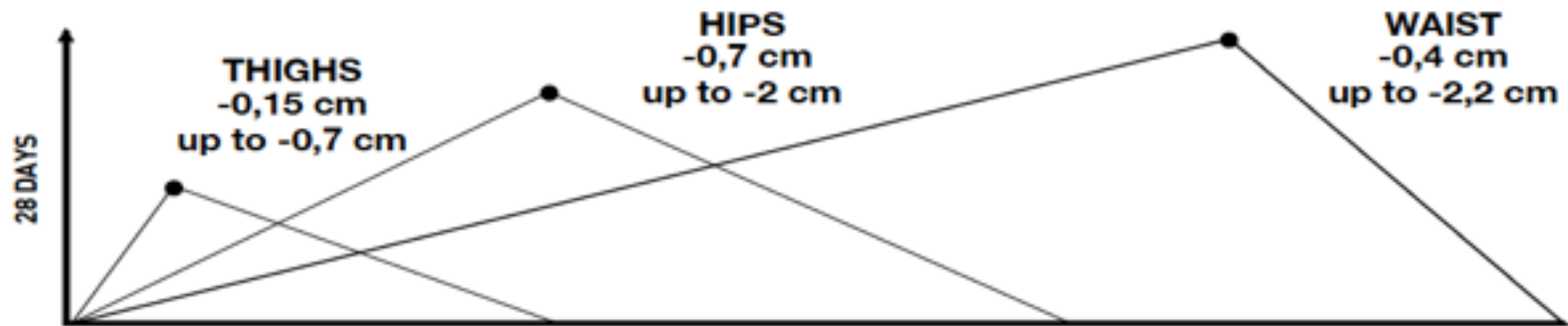


SUPER ACTIVE: PINK PEPPER

Pepe Rosa:

The extraordinary power of PINK PEPPER: the spice that **burns excess fat**. The oily extract of Pink Pepper **intervenes on the process of formation of adipocytes**. In a **first phase**, the Peripilina synthesis **decreases**, the **protein that determines the transformation of young adipocytes into mature adipocytes**: in this way, **the lipid deposits are reduced**. In the **second phase**, the **Pink Pepper activates a lipolytic action**: young adipocytes are easily burned by the division of triglycerides into glycerol and fatty acids.

FOCUS ON: PINK PEPPER



Ex vivo tests. 0,1% of oily extract of Pink Pepper. 18 women. 28 days of twice daily application. Measure of centimetric loss on waist, hips and thighs.

Tone & lift booster

TONING AND FIRMING BODY
CONCENTRATE
BASED ON **ORGANIC GREEN COFFEE**

- Performs an **anti-slackening and firming action**.
- **Fights the loss of skin tone**, re-compacting the extracellular matrix.
- **Protects** the skin, preserving its **youthfulness**.
- Leaving the skin **hydrated, supple, soft, compact** and **vital**
- Gives a reducing and **slimming action** to **body treatments** of the line.

Shake well before use. Add 3-4 drops to Velvet Body Fluid and apply to body.



25ml



SUPER ACTIVE: ORGANIC GREEN COFFEE

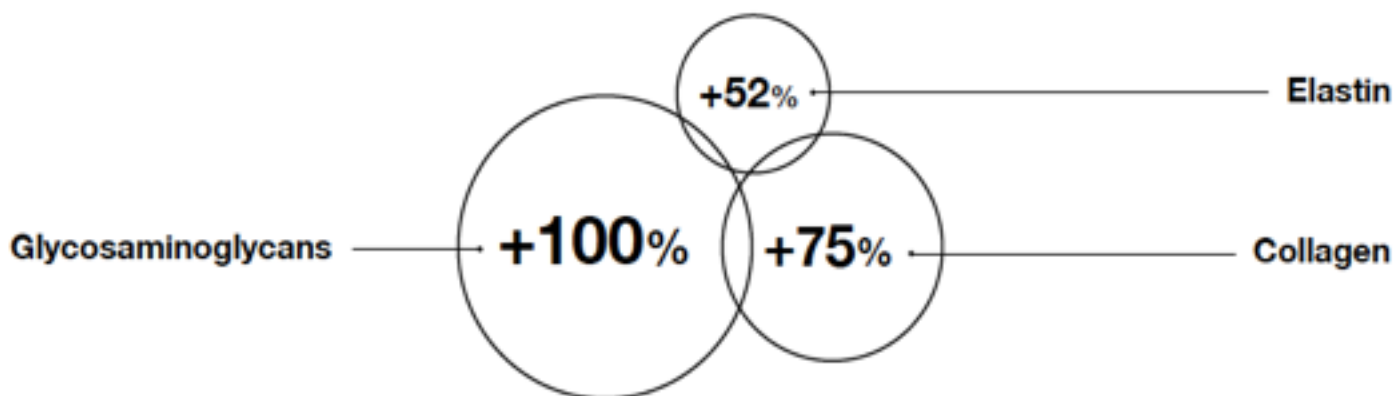
Organic green coffee

An ultra-effective active ingredient in firming the skin, which has a targeted and simultaneous action on skin tone and firmness, giving new turgor to relaxed skin. **Multi-level action** on the components of the skin:

- increase of 7 times of Aquaporin, for a **immediately more hydrated skin**;
- high content of **Omega 6**, for a **firming** and reepithelialising **effect**;
- re-consolidation of the extracellular matrix;
- exponential **increase** of reepithelialising and the **creation of new tissue**.

FOCUS ON: OILY EXTRACT OF ORGANIC GREEN COFFEE

Re-compacts the extracellular matrix, thanks to the increase of its components:



Incorporating Oway Scalp/Hair Care & HeadSpa products

Scalp care is essentially skin care making them the perfect addition to your skincare treatments.

The following products make great companions to customized facial treatments.

AROMATHERAPY: atomisation of water and essences without using heat.

ATMOSPHERE: a dimmed white light as an ideal relaxing, regenerating atmosphere setter.

AIR PURIFICATION AND HUMIDIFICATION: the environment becomes scented, fresh and depurated through the humidifying function.

DESIGN ELEMENTS: the design is simple and essential and befits all types of interior decorations.



- Nota
- Diffuser
- Aroma Tea & Tea Pot
- Wood bowl applicator kit



- Purifying Rice Wax
- Amazonian Control Clay
- Zanthoxylum Soothing Gel



- Hyalominerals
- Ceramides F
- Bio-rich Water
- Scale



- Soothing Remedy
- Remedy Hand Balm
- Sage
- Thyme
- Helichrysum

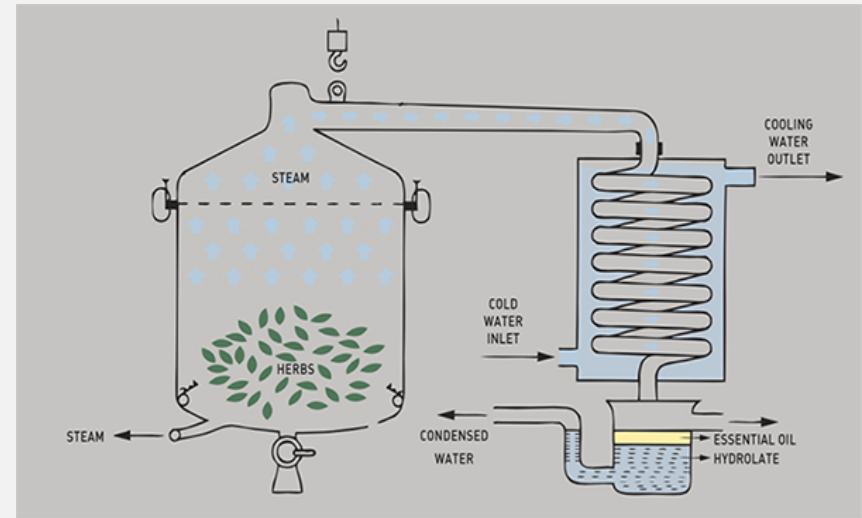


Companion Products



Bio-Rich Water

Nestled away in the green hills of Bologna, Italy is *OrtOfficina*. This is the Organic Way's 50,000 sqm of family-owned, biodynamic farmland where 12 types of medicinal plants are harvested without the use of chemicals, solvents or machinery.



After these precious botanicals are handpicked, they are steam distilled without any chemicals, and transformed into 100% pure organic essential oils. These precious essential oils become the active ingredients and all natural fragrance in Oway products.

But did you know the remaining water from the steam distillation is packed full of nutrients? This extraordinary water is known as *Hydrolates* – it's the heart and soul powering our **Bio-Rich Water**.



What are Hydrolates?

Hydrolates are active waters, deeply infused with soluble plant extracts, making it rich in benefits.

They're excellent invigorators of the mind, body and hair as they boast refreshing, moisturizing, decongestant and astringent properties.

Instead of casting away this precious water, Oway has harnessed it's amazing properties to create Bio Rich Water – a versatile spray that can be used in many unique ways:



- pH 5.0-6.0

Bio-Rich Water cont.



- Cutting Spray
- Primer for Hair Products
- Anti pollution hair and body spray
- Primer/Setting Spray: use before and after make-up application Also makes great primer for mascara application
- Room Spray
- Skin re-hydrator and emollient

Micronised Plant Mixtures

“Zero-mile” biodynamic micronized plants for creating custom blended skin care treatments.

- Helichrysum – Mature Skin
- Sage – Oily/Acneic Skin type
- Thyme – Dry/Acneic Skin type

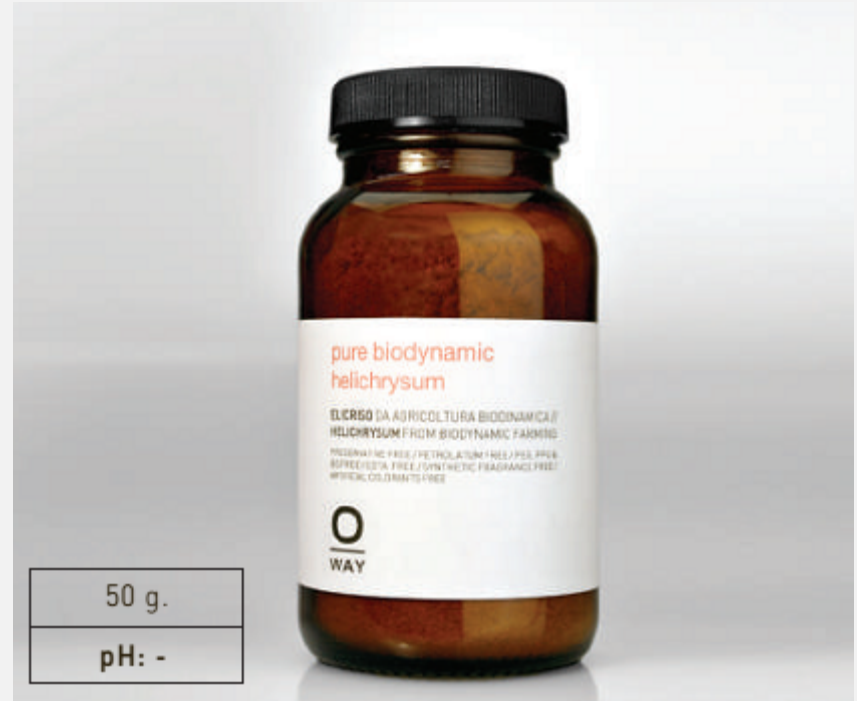


MIXTURE WITH MICRONISED PLANT

pure biodynamic helichrysum



Thanks to its soothing action against redness and irritation, it is particularly suited for treating delicate skin. Best suited for mature skin. Aids in smoothing wrinkles and fine lines and also helps reduce appearance of redness and scars.

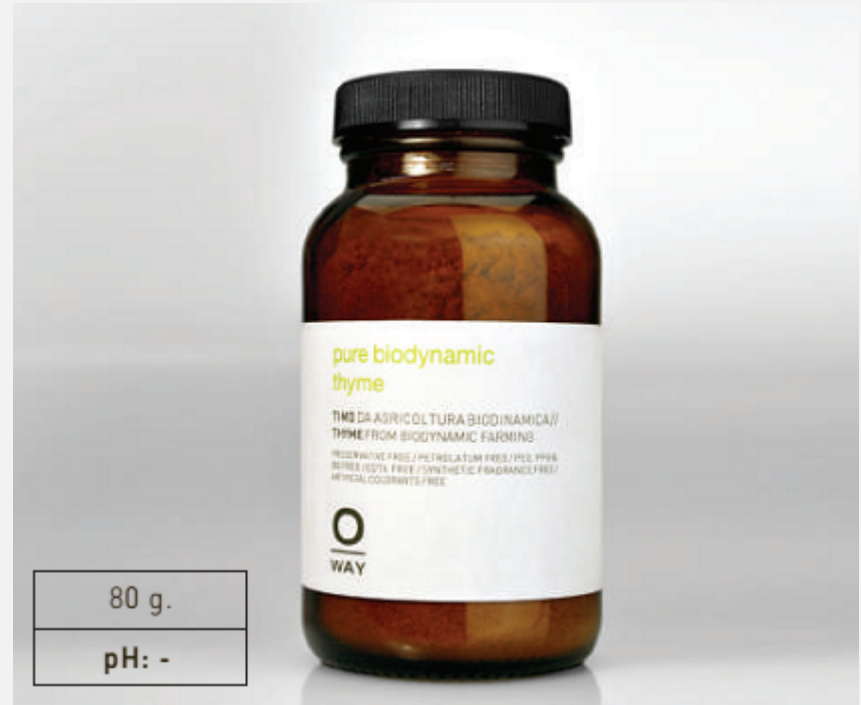


MIXTURE WITH MICRONISED PLANT

pure biodynamic thyme

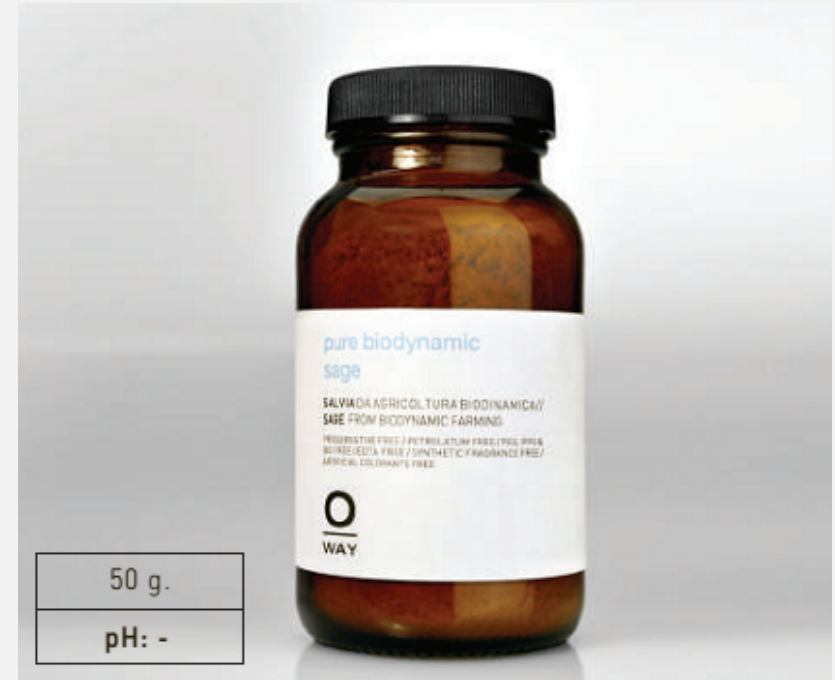


Thyme is a natural invigorator of micro-blood circulation and has antimicrobial, sebum-regulating and antiseptic properties. Perfect for severe acne prone skin.



MIXTURE WITH MICRONISED PLANT

pure biodynamic sage



Activates the circulation of blood flow, therefor improving skin functions.

Presence of phenols, provides antiseptic and antibacterial functions. May be used on problematic, oily, and acne prone skin. Also aids in antiaging of the skin.

zanthoxylum soothing gel



Zanthoxylum, an ancient plant of Chinese origin, it performs soothing, anti-irritant actions. Delivers relief to sensitive skin and helps naturally control redness and irritation. Allontoin, stimulates cell growth and multiplication. Helps reduce healing times from inflammation while moisturizing and balancing skin.



purifying rice wax



Exfoliates and regenerates skin and reactivates skins microcirculation. Rice wax micro-granules perform a natural, delicate and effective scrub.



amazonian control clay



Derived from the Amazon Basin, it rebalances oily skin while performing delicate yet effective detoxing, astringent and purifying actions. Revitalizes and re-mineralizes the skin. Active ingredient: **Kaolin**



INTENSIVE TREATMENT

soothing remedy

No-rinse dermo-soothing treatment for sensitive skin. Reduces irritations and itching with a soothing and anti-reddening action. Gently moisturizes the skin and restores balance.

Contains **Biodynamic Chamomile Distillate** which calms inflammation and improves damaged tissue.

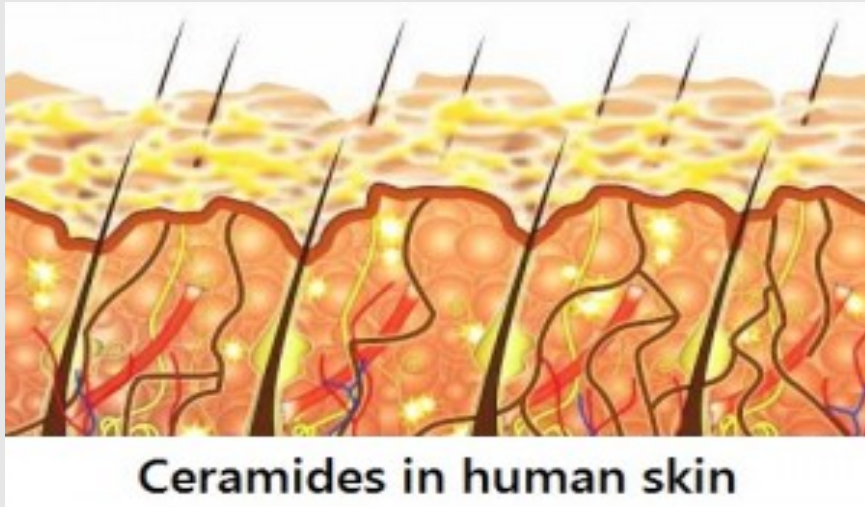
Organic Aloe Vera, rich in polysaccharides, Amino Acids, Organic Acids and phytosterols, has calming and painkilling properties. It also accelerates the healing of the skin and has antibacterial and antimicrobial action contributing to restoring the skin microflora balance.



Also contains **Zanthoxylum**.



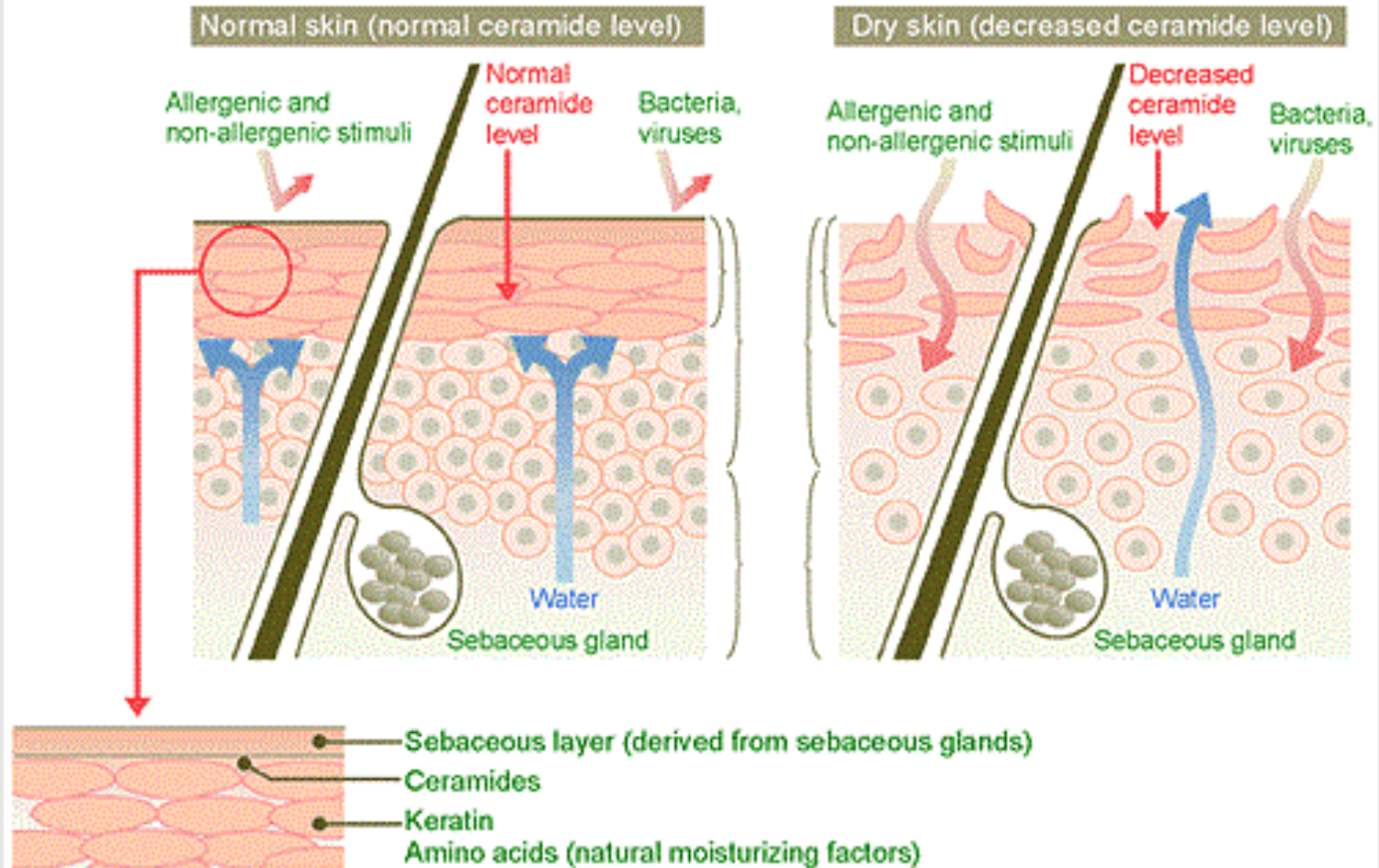
Ceramides F



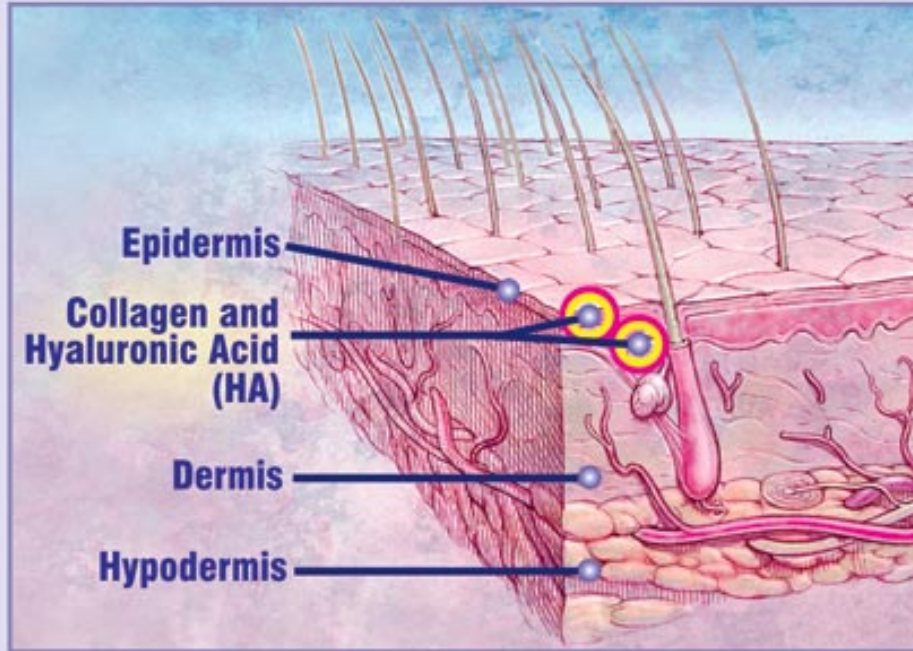
Ceramides F is rich in Ceramide 3, Linoleic Acid and Linolenic Acid. The Ceramide 3 assists in retaining moisture in the skin and also helps relieve eczema or dermatitis. Linoleic Acid, or Vitamin F is an Omega 6 fatty acid, and Linolenic Acid is an Omega 3 fatty acid which both have anti-inflammatory and antioxidant properties. Linolenic Acid also helps assist other beneficial ingredients permeate into the skin for optimal results.



Comparison between normal and dry skins



Hyalominerals



Hyalominerals contain Saccharomyces that perform as antioxidants. anti-irritants and amino acids. It also has Hydrolyzed Glycosaminoglycans to increase elasticity as well as **Hyaluronic Acid** to retain moisture to strengthen the skins barrier and lastly, Arginine to help rebuild collagen.

Remedy Hand Balm

Nourishing and Lipid-Replenishing Hand Treatment

A repairing treatment that performs a lipid-replenishing action giving a feeling of comfort and softness. Apply once per day and as needed.

Over 98.7% Naturally Derived Ingredients; essential oils, butters, emollients, oils and extracts of botanical, organic, biodynamic fair-trade origin. Provide different levels of soothing, hydrating and different lipid levels for the skin.

Thanks to the complex of biodynamic nut, Chia Butter and Pataua Oil, it replenishes and regenerates the lipid barrier. The nut is rich in vitamin C, flavonoids and tannins and performs an anti-age, anti-blemish and anti-redness action.

0% Preservatives, Silicones, Parabens, Petrolatum, PEG, PPG & BG, EDTA, Synthetic Fragrances, Artificial Colourants, Phtalates, Dermatologically Tested, Nickel Tested.



pH 5-6

100% aluminium tube & 0% unnecessary packaging

50ml



Example of an Oway Basic but Customizable Facial Protocol



Facial Prep:

- 3 warm wet towels scented with Nota
- Wooden bowl kit
- Diffuser with Nota dispensing
- Tea Pot with Aroma brewing

Products Needed:

- Perfect Skin cleansing Cream
- De-Stress Tonic
- Replumping Booster
- Regenerating Booster
- Velvet Body Fluid
- Radiant Face Balm
- Purifying Rice Wax
- Amazonian Control Clay
- Zanthoxylum Soothing Gel
- Soothing Remedy
- Remedy Hand Balm
- Sage, Thyme and Helichrysum
- Nota
- Aroma
- Facial brush

Facial Protocol continued:

Consultation:

Over a cup of Aroma tea with client, review clients daily routine, areas of concern, facial expectations. Then map out best products and maintenance plan with/for client.

- Step 1)** **Analyze** guests skin under mag lamp. Mist with **Bio Rich water**
- Step 2)** Place drop of **Nota** on each wrist and introduce touch with cranial **massage**
- Step 3)** **Cleanse** skin twice with steam and **Perfect Skin Cleansing Cream**
- Step 4)** **Exfoliate** using ½ tsp of **Purifying Rice Wax**. Then remove with wet towel
- Step 5)** **Tone** by misting **De-Stress Tonic**
- Step 6)** **Apply Mask**. Create a custom mask with either **Zanthoxylum Soothing gel** or **Amazonian Control Clay** with appropriate herb (Sage, Helichrysum, or Thyme) and **Replumping Booster**. Let cure 7-10min. Remove with wet towel.
- Step 6)** **Tone and Seal**. Tone with **De-stress Tonic** and seal with **Bio Rich Water**.
- Step 7)** **Spot Treat** any red or sensitive areas with **Soothing Remedy**.
- Step 8)** **Serum**, apply **Regenerating Booster**, 1 drop on each cheek, forehead and chin
- Step 9)** **Moisturize** with **Radiant Face Balm**, massage into skin
- Step 10)** **Eyes**, using **Replumping Booster**, place one drop on ring finger mixed with a touch of Radiant Face Balm and apply to the under eye area.

While mask is curing, perform decollete and shoulder massage with **Velvet Body Fluid. Then perform a hand massage using **Remedy Hand Balm**.*



in collaboration with Andrea Keeling of Midori Salon & Spa





Changing Salons For The Better!